

TREMCO EXOAIR 230,
ENVIRODRI OR FUNCTIONAL
EQUIVALENT

WET SET DOWELS TO
MATCH VERTICAL
REINFORCEMENT
BETWEEN POUR OR
AS SPECIFIED

PROPRIETARY EMBEDDED
JOISTS ANCHORAGE
SYSTEM OR EQUIVALENT

NUDURA 12" (305mm)
STANDARD FORM UNIT

EXTERIOR FINISH
AS SPECIFIED

MIN $\frac{1}{2}$ " (13mm)
GYPSUM BOARD

BLOCKING BETWEEN JOISTS

FLOOR JOISTS/TRUSSES
AS SPECIFIED

MIN $\frac{1}{2}$ " (13mm) GYPSUM BOARD

HORIZ/VERT REINFORCEMENT
AS PER CODE OR AS
SPECIFIED (SEE NOTE 1)

NOTES:

1) FOR OPTIMAL REINFORCEMENT PLACEMENT IN THE NUDURA FORM, SPACING OF HORIZONTAL REINFORCEMENT TO BE SPECIFIED AT 18" (457mm) O.C. AND VERTICAL REINFORCEMENT TO BE SPECIFIED AT MULTIPLES OF 8" (203mm) O.C. REFER TO NUDURA REINFORCEMENT PLACEMENT DETAILS.

This detail is for general informational purposes only. The project design professional determines, in its sole discretion, whether this detail or a functionally equivalent detail is best suited for the project with respect to any architecture, engineering, and design requirements, including any local building code requirements. If this document is not reviewed and the product is not approved for use by a licensed design professional, the customer agrees that the detail may contain substantive flaws requiring correction, and hereby releases Tremco CPG Inc. from any and all liability related to the design and installation of the product. This detail is subject to change without notice. Contact Tremco to ensure you have the most recent version.

Combustible Construction - Intermediate Floor



Nudura Technical Support: 866-468-6299
International: +1 705-726-9499

Detail: Nudura 12" (305mm) Form Unit, Floor Joist Connection, Multi-Purpose
Hanger, Joists Perp. to Wall

Drawn by: TVC

Checked by: KS

Scale: 1:8

Revision #: 04

Revised by: KAB

Date: 3/13/2024

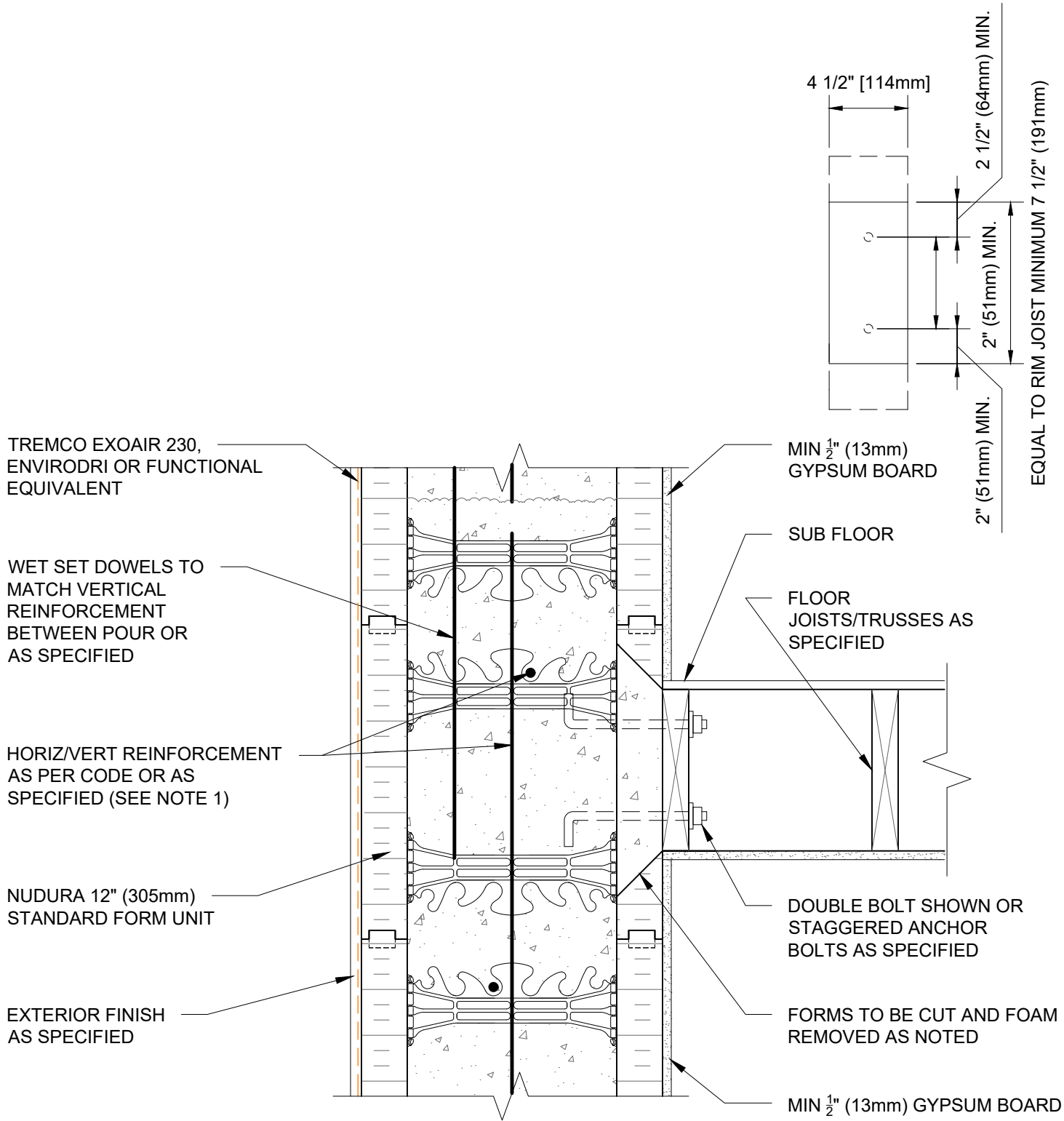
File Name:

C12A09



Construction Products Group

www.tremcocpg.com





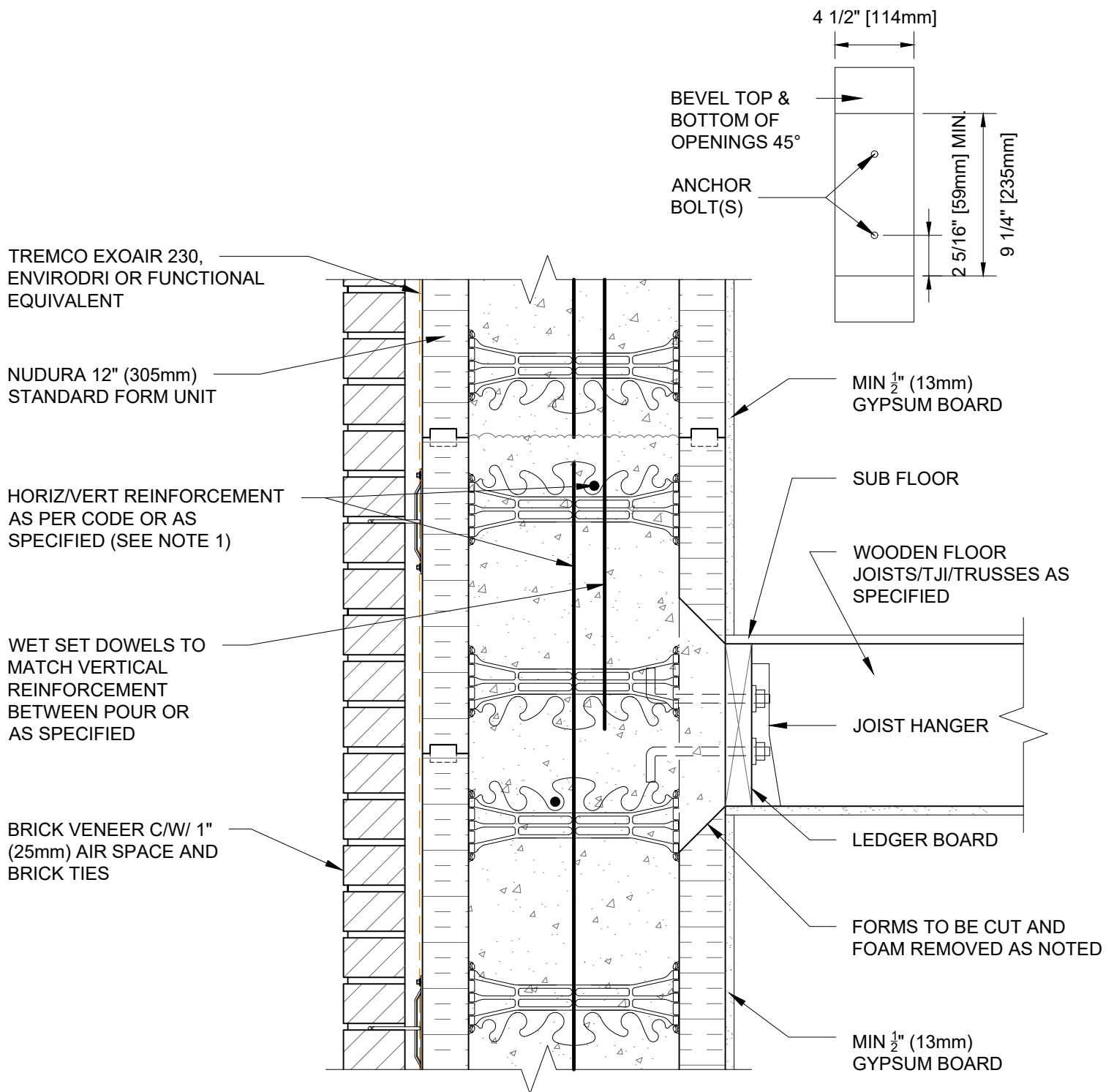
NOTES:

1) FOR OPTIMAL REINFORCEMENT PLACEMENT IN THE NUDURA FORM, SPACING OF HORIZONTAL REINFORCEMENT TO BE SPECIFIED AT 18" (457mm) O.C. AND VERTICAL REINFORCEMENT TO BE SPECIFIED AT MULTIPLES OF 8" (203mm) O.C. REFER TO NUDURA REINFORCEMENT PLACEMENT DETAILS.

This detail is for general informational purposes only. The project design professional determines, in its sole discretion, whether this detail or a functionally equivalent detail is best suited for the project with respect to any architecture, engineering, and design requirements, including any local building code requirements. If this document is not reviewed and the product is not approved for use by a licensed design professional, the customer agrees that the detail may contain substantive flaws requiring correction, and hereby releases Tremco CPG Inc. from any and all liability related to the design and installation of the product. This detail is subject to change without notice. Contact Tremco to ensure you have the most recent version.

Combustible Construction - Intermediate Floor

 Nudura Technical Support: 866-468-6299 International: +1 705-726-9499	Detail: Nudura 12" (305mm) Form Unit, Floor Joist Connection, Multi-Purpose Hanger, Joists Parallel to Wall			File Name: C12A10	 Construction Products Group
	Drawn by: TVC	Checked by: KS	Scale: 1:8		
	Revision #: 04	Revised by: KAB	Date: 3/13/2024		
	www.tremcocpg.com				



NOTES:

1) FOR OPTIMAL REINFORCEMENT PLACEMENT IN THE NUDURA FORM, SPACING OF HORIZONTAL REINFORCEMENT TO BE SPECIFIED AT 18" (457mm) O.C. AND VERTICAL REINFORCEMENT TO BE SPECIFIED AT MULTIPLES OF 8" (203mm) O.C. REFER TO NUDURA REINFORCEMENT PLACEMENT DETAILS.

This detail is for general informational purposes only. The project design professional determines, in its sole discretion, whether this detail or a functionally equivalent detail is best suited for the project with respect to any architecture, engineering, and design requirements, including any local building code requirements. If this document is not reviewed and the product is not approved for use by a licensed design professional, the customer agrees that the detail may contain substantive flaws requiring correction, and hereby releases Tremco CPG Inc. from any and all liability related to the design and installation of the product. This detail is subject to change without notice. Contact Tremco to ensure you have the most recent version.

Combustible Construction - Intermediate Floor



Nudura Technical Support: 866-468-6299
International: +1 705-726-9499

Detail: Nudura 12" (305mm) Form Unit, Ledger Board Detail, Brick Veneer Finish, Perp. to Wall

Drawn by: TVC

Checked by: KS

Scale: 1:8

Revision #: 02

Revised by: KAB

Date: 3/13/2024

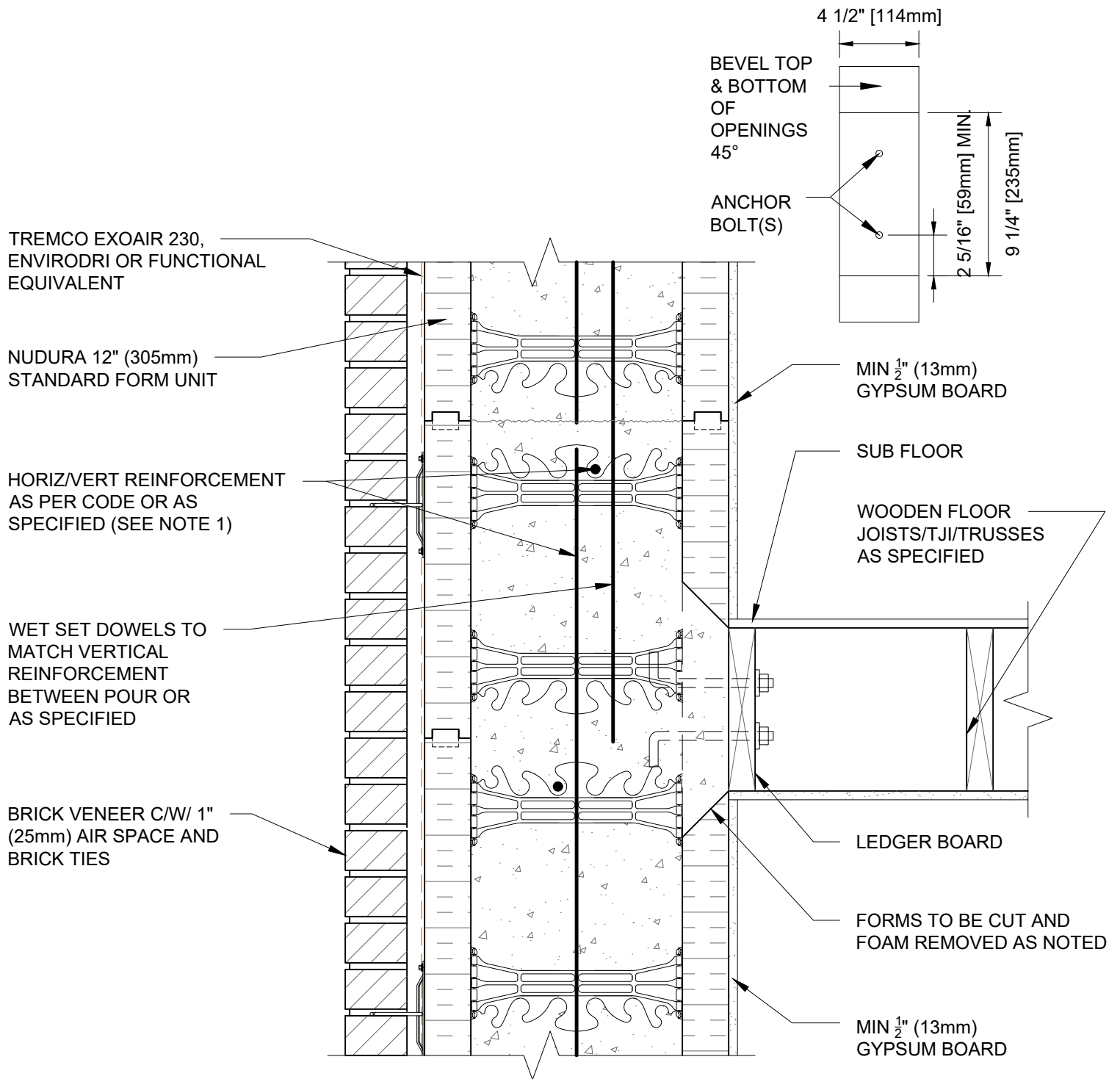
File Name:

C12A11



Construction Products Group

www.tremccpg.com



NOTES:

1) FOR OPTIMAL REINFORCEMENT PLACEMENT IN THE NUDURA FORM, SPACING OF HORIZONTAL REINFORCEMENT TO BE SPECIFIED AT 18" (457mm) O.C. AND VERTICAL REINFORCEMENT TO BE SPECIFIED AT MULTIPLES OF 8" (203mm) O.C. REFER TO NUDURA REINFORCEMENT PLACEMENT DETAILS.

This detail is for general informational purposes only. The project design professional determines, in its sole discretion, whether this detail or a functionally equivalent detail is best suited for the project with respect to any architecture, engineering, and design requirements, including any local building code requirements. If this document is not reviewed and the product is not approved for use by a licensed design professional, the customer agrees that the detail may contain substantive flaws requiring correction, and hereby releases Tremco CPG Inc. from any and all liability related to the design and installation of the product. This detail is subject to change without notice. Contact Tremco to ensure you have the most recent version.

Combustible Construction - Intermediate Floor



Nudura Technical Support: 866-468-6299
International: +1 705-726-9499

Detail: Nudura 12" (305mm) Form Unit, Ledger Board Detail, Brick Veneer Finish,
Joists Parallel to Wall

Drawn by: TVC

Checked by: KS

Scale: 1:8

Revision #: 02

Revised by: KAB

Date: 3/13/2024

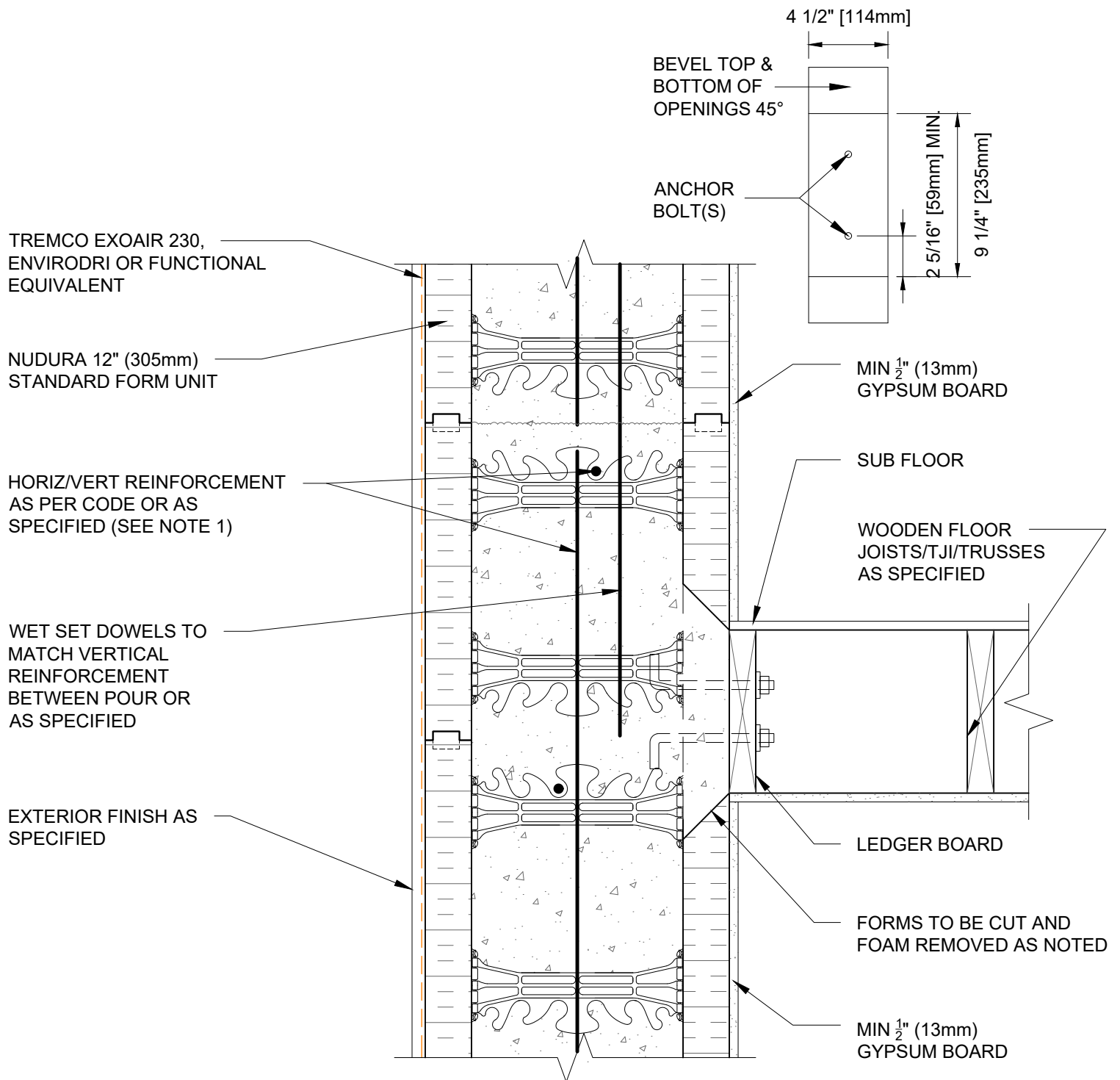
www.tremcocpg.com

File Name:

C12A12



Construction Products Group



NOTES:

1) FOR OPTIMAL REINFORCEMENT PLACEMENT IN THE NUDURA FORM, SPACING OF HORIZONTAL REINFORCEMENT TO BE SPECIFIED AT 18" (457mm) O.C. AND VERTICAL REINFORCEMENT TO BE SPECIFIED AT MULTIPLES OF 8" (203mm) O.C. REFER TO NUDURA REINFORCEMENT PLACEMENT DETAILS.

This detail is for general informational purposes only. The project design professional determines, in its sole discretion, whether this detail or a functionally equivalent detail is best suited for the project with respect to any architecture, engineering, and design requirements, including any local building code requirements. If this document is not reviewed and the product is not approved for use by a licensed design professional, the customer agrees that the detail may contain substantive flaws requiring correction, and hereby releases Tremco CPG Inc. from any and all liability related to the design and installation of the product. This detail is subject to change without notice. Contact Tremco to ensure you have the most recent version.

CombustibleConstruction - Intermediate Floor



Nudura Technical Support: 866-468-6299
International: +1 705-726-9499

Detail: Nudura 12" (305mm) Form Unit, Ledger Board Detail, Exterior Finish as Specified, Joist Perp. to Wall

Drawn by: TVC

Checked by: KS

Scale: 1:8

Revision #: 02

Revised by: KAB

Date: 3/13/2024

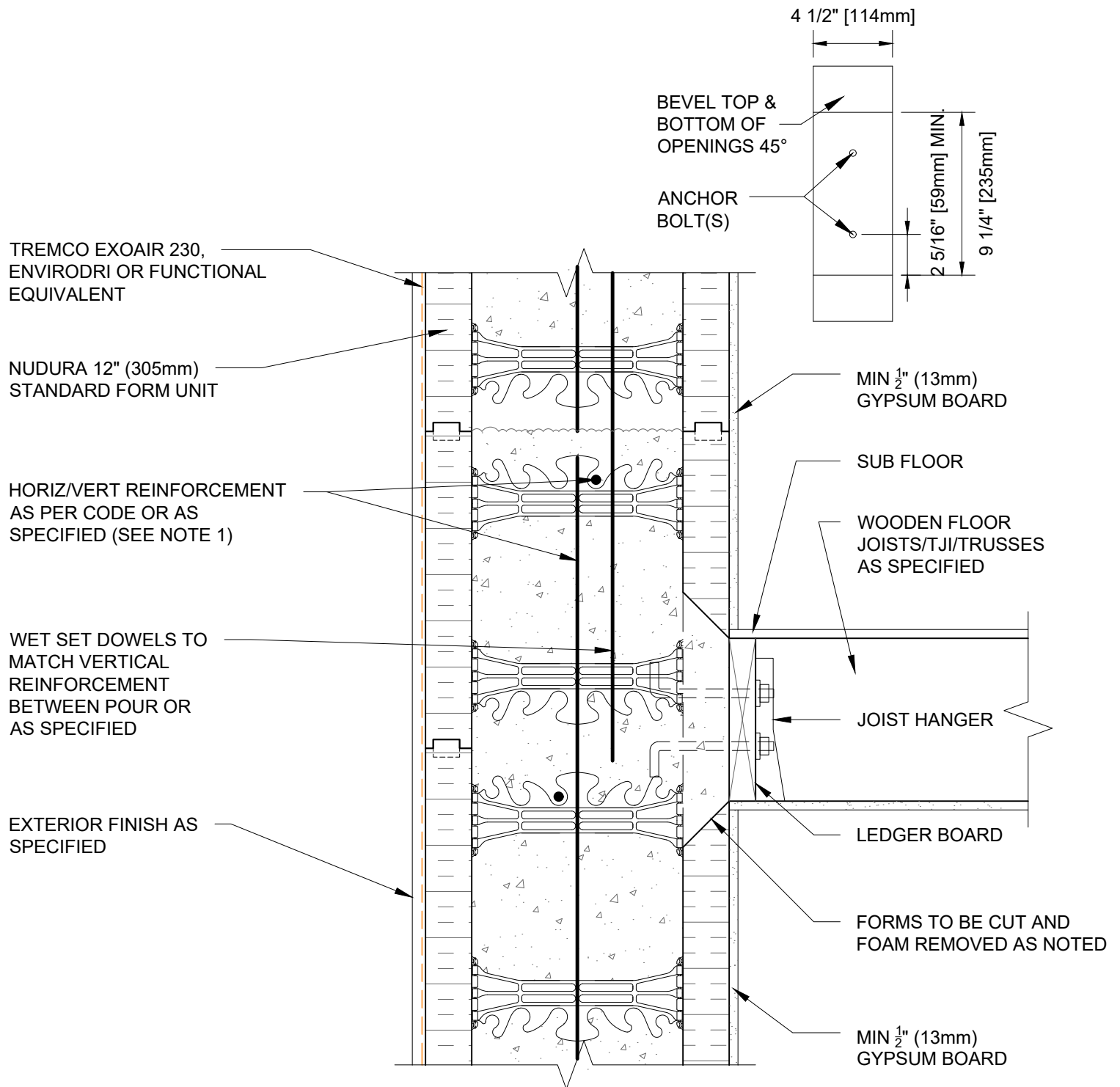
www.tremcocpg.com

File Name:

C12A13



Construction Products Group



NOTES:

1) FOR OPTIMAL REINFORCEMENT PLACEMENT IN THE NUDURA FORM, SPACING OF HORIZONTAL REINFORCEMENT TO BE SPECIFIED AT 18" (457mm) O.C. AND VERTICAL REINFORCEMENT TO BE SPECIFIED AT MULTIPLES OF 8" (203mm) O.C. REFER TO NUDURA REINFORCEMENT PLACEMENT DETAILS.

This detail is for general informational purposes only. The project design professional determines, in its sole discretion, whether this detail or a functionally equivalent detail is best suited for the project with respect to any architecture, engineering, and design requirements, including any local building code requirements. If this document is not reviewed and the product is not approved for use by a licensed design professional, the customer agrees that the detail may contain substantive flaws requiring correction, and hereby releases Tremco CPG Inc. from any and all liability related to the design and installation of the product. This detail is subject to change without notice. Contact Tremco to ensure you have the most recent version.

Combustible Construction - Intermediate Floor



Nudura Technical Support: 866-468-6299
International: +1 705-726-9499

Detail: Nudura 12" (305mm) Form Unit, Ledger Board Detail, Exterior Finish as Specified, Joist Parallel to Wall

Drawn by: TVC

Checked by: KS

Scale: 1:8

Revision #: 02

Revised by: KAB

Date: 3/13/2024

File Name:

C12A14



Construction Products Group

www.tremccpg.com

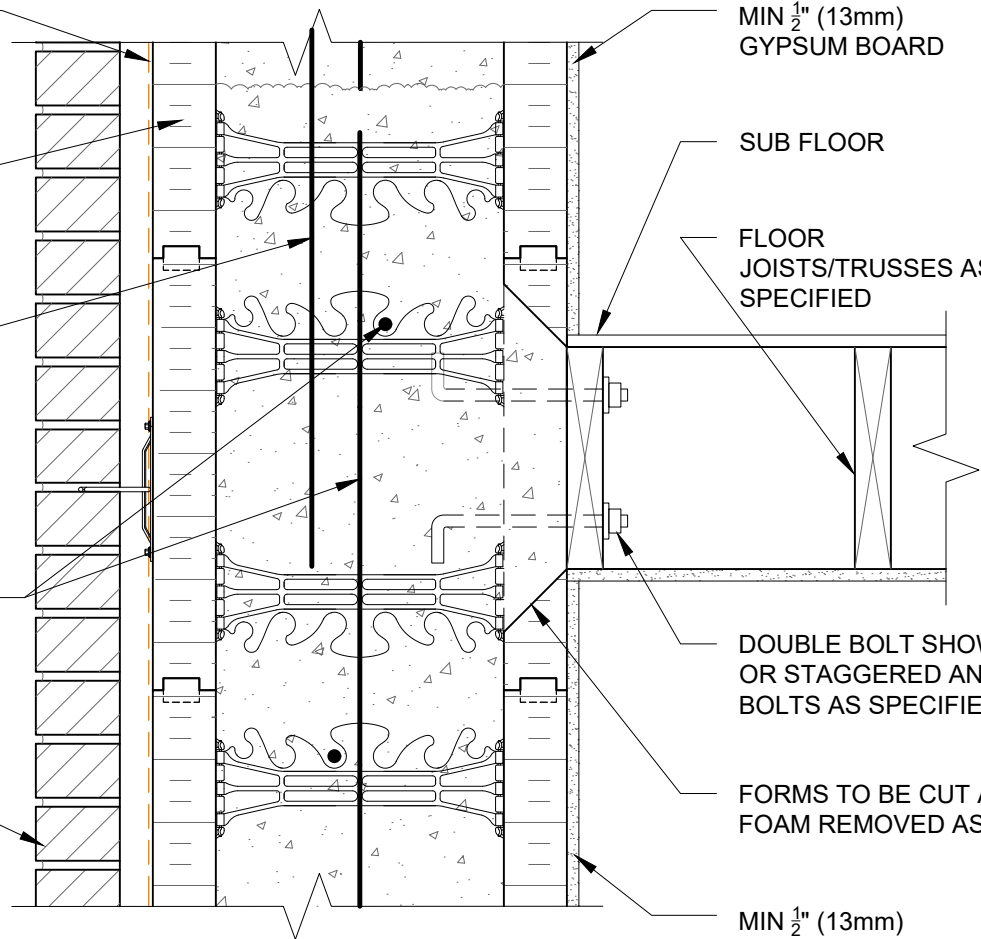
TREMCO EXOAIR 230,
ENVIRODRI OR FUNCTIONAL
EQUIVALENT

NUDURA 12" (305mm)
STANDARD FORM UNIT

WET SET DOWELS TO
MATCH VERTICAL
REINFORCEMENT
BETWEEN POUR OR
AS SPECIFIED

HORIZ/VERT REINFORCEMENT
AS PER CODE OR AS
SPECIFIED (SEE NOTE 1)

BRICK VENEER C/W/ 1"
(25mm) AIR SPACE AND
BRICK TIES



4 1/2" [114mm]

MIN 1/2" (13mm)
GYPSUM BOARD

SUB FLOOR

FLOOR
JOISTS/TRUSSES AS
SPECIFIED

DOUBLE BOLT SHOWN
OR STAGGERED ANCHOR
BOLTS AS SPECIFIED

FORMS TO BE CUT AND
FOAM REMOVED AS NOTED

MIN 1/2" (13mm)
GYPSUM BOARD

2 1/2" (64mm) MIN.
2" (51mm) MIN.
2" (51mm) MIN.
EQUAL TO RIM JOIST MINIMUM 7 1/2" (191mm)

NOTES:

1) FOR OPTIMAL REINFORCEMENT PLACEMENT IN THE NUDURA FORM,
SPACING OF HORIZONTAL REINFORCEMENT TO BE SPECIFIED AT 18"
(457mm) O.C. AND VERTICAL REINFORCEMENT TO BE SPECIFIED AT
MULTIPLES OF 8" (203mm) O.C. REFER TO NUDURA REINFORCEMENT
PLACEMENT DETAILS.

This detail is for general informational purposes only. The project design professional determines, in its sole discretion, whether this detail or a functionally equivalent detail is best suited for the project with respect to any architecture, engineering, and design requirements, including any local building code requirements. If this document is not reviewed and the product is not approved for use by a licensed design professional, the customer agrees that the detail may contain substantive flaws requiring correction, and hereby releases Tremco CPG Inc. from any and all liability related to the design and installation of the product. This detail is subject to change without notice. Contact Tremco to ensure you have the most recent version.

Combustible Construction - Intermediate Floor



Nudura Technical Support: 866-468-6299
International: +1 705-726-9499

Detail: Nudura 12" (305mm) Form Unit, Floor Joist Connection, Multi-Purpose
Hanger, Joists Parallel to Wall

Drawn by: TVC

Checked by: KS

Scale: 1:8

Revision #: 04

Revised by: KAB

Date: 3/13/2024

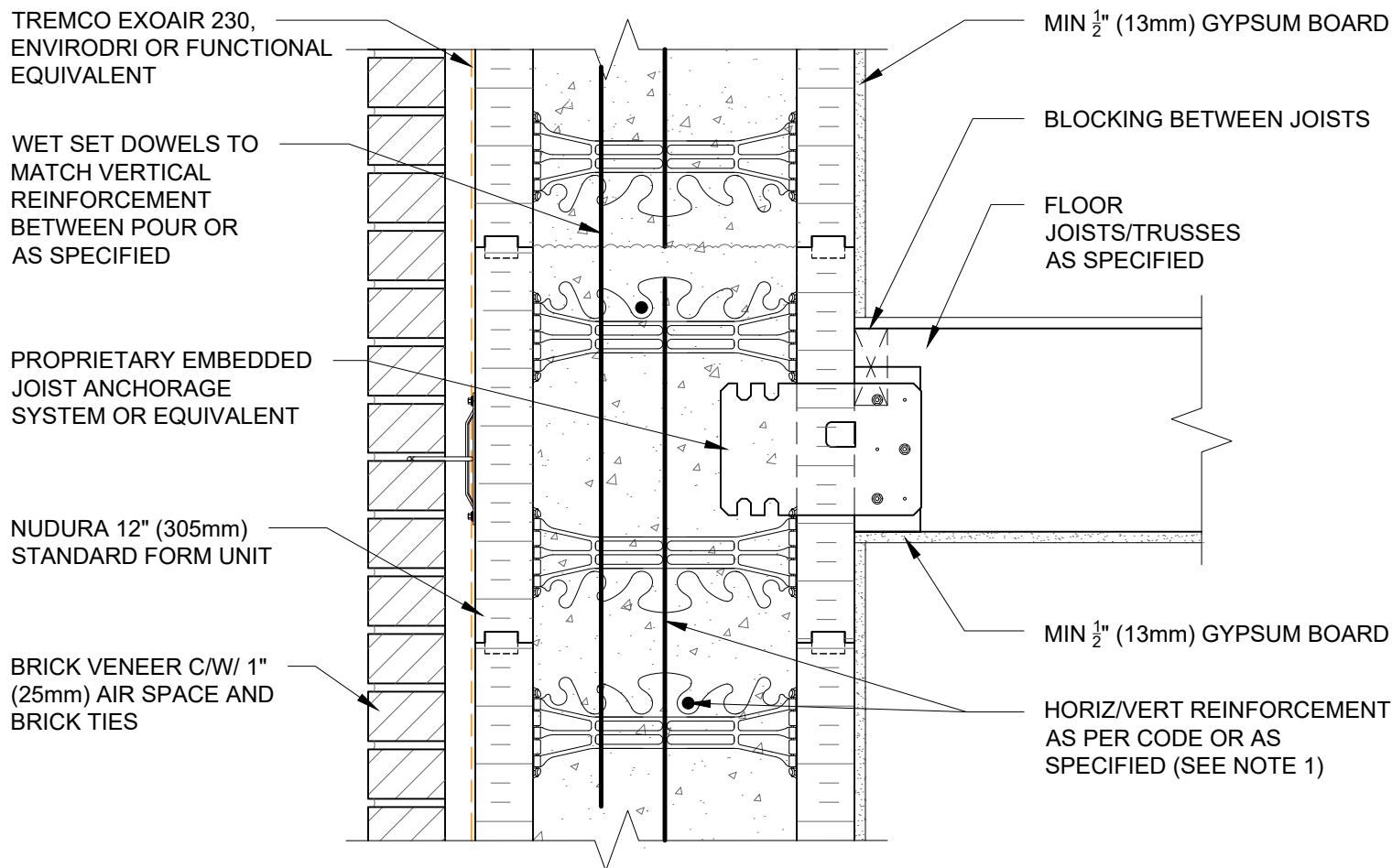
www.tremcocpg.com

File Name:

C12A15



Construction Products Group



NOTES:

1) FOR OPTIMAL REINFORCEMENT PLACEMENT IN THE NUDURA FORM, SPACING OF HORIZONTAL REINFORCEMENT TO BE SPECIFIED AT 18" (457mm) O.C. AND VERTICAL REINFORCEMENT TO BE SPECIFIED AT MULTIPLES OF 8" (203mm) O.C. REFER TO NUDURA REINFORCEMENT PLACEMENT DETAILS.

This detail is for general informational purposes only. The project design professional determines, in its sole discretion, whether this detail or a functionally equivalent detail is best suited for the project with respect to any architecture, engineering, and design requirements, including any local building code requirements. If this document is not reviewed and the product is not approved for use by a licensed design professional, the customer agrees that the detail may contain substantive flaws requiring correction, and hereby releases Tremco CPG Inc. from any and all liability related to the design and installation of the product. This detail is subject to change without notice. Contact Tremco to ensure you have the most recent version.

Combustible Construction - Intermediate Floor



Nudura Technical Support: 866-468-6299
International: +1 705-726-9499

Detail: Nudura 12" (305mm) Form Unit, Floor Joist Connection, Multi-Purpose
Hanger, Brick Veneer Finish

Drawn by: TVC

Checked by: KS

Scale: 1:8

Revision #: 04

Revised by: KAB

Date: 3/13/2024

File Name:

C12A16



Construction Products Group

www.tremcocpg.com

TREMCO EXOAIR 230,
ENVIRODRI OR FUNCTIONAL
EQUIVALENT

WET SET DOWELS TO MATCH
VERTICAL REINFORCEMENT
BETWEEN POUR OR AS
SPECIFIED

NUDURA 12" (305mm)
STANDARD FORM UNIT

HORIZ/VERT REINFORCEMENT
AS PER CODE OR AS
SPECIFIED (SEE NOTE 1)

EXTERIOR FINISH AS
SPECIFIED

MIN $\frac{1}{2}$ " (13mm)
GYPSUM BOARD

RIM JOIST

WOOD JOISTS/TJI OR
TRUSSES AS SPECIFIED

SHEAR BRACKET

SIMPSON STRONG TIE
(ICFVL)

MIN $\frac{1}{2}$ " (13mm)
GYPSUM BOARD

NOTES:

1) FOR OPTIMAL REINFORCEMENT PLACEMENT IN THE NUDURA FORM,
SPACING OF HORIZONTAL REINFORCEMENT TO BE SPECIFIED AT 18"
(457mm) O.C. AND VERTICAL REINFORCEMENT TO BE SPECIFIED AT
MULTIPLES OF 8" (203mm) O.C. REFER TO NUDURA REINFORCEMENT
PLACEMENT DETAILS.

This detail is for general informational purposes only. The project design professional determines, in its sole discretion, whether this detail or a functionally equivalent detail is best suited for the project with respect to any architecture, engineering, and design requirements, including any local building code requirements. If this document is not reviewed and the product is not approved for use by a licensed design professional, the customer agrees that the detail may contain substantive flaws requiring correction, and hereby releases Tremco CPG Inc. from any and all liability related to the design and installation of the product. This detail is subject to change without notice. Contact Tremco to ensure you have the most recent version.

Combustible Construction - Intermediate Floor



Nudura Technical Support: 866-468-6299
International: +1 705-726-9499

Detail: Nudura 12" (305mm) Form Unit, Simpson Ledger Hanger System, Exterior
Finish as Specified, Parallel to Wall, Intermediate Floor Connection

Drawn by: TVC

Checked by: KS

Scale: 1:8

Revision #: 04

Revised by: KAB

Date: 3/13/2024

File Name:

C12A21



Construction Products Group

www.tremcocpg.com

TREMCO EXOAIR 230,
ENVIRODRI OR FUNCTIONAL
EQUIVALENT

WET SET DOWELS TO MATCH
VERTICAL REINFORCEMENT
BETWEEN POUR OR AS
SPECIFIED

NUDURA 12" (305mm)
STANDARD FORM UNIT

HORIZ/VERT REINFORCEMENT
AS PER CODE OR AS
SPECIFIED (SEE NOTE 1)

BRICK VENEER C/W 1"
(25mm) AIR SPACE AND
BRICK TIES

MIN $\frac{1}{2}$ " (13mm)
GYPSUM BOARD

RIM JOIST

WOOD JOISTS/TJI OR
TRUSSES AS SPECIFIED

SHEAR BRACKET

SIMPSON STRONG TIE
(ICFVL)

MIN $\frac{1}{2}$ " (13mm)
GYPSUM BOARD

NOTES:

1) FOR OPTIMAL REINFORCEMENT PLACEMENT IN THE NUDURA FORM,
SPACING OF HORIZONTAL REINFORCEMENT TO BE SPECIFIED AT 18"
(457mm) O.C. AND VERTICAL REINFORCEMENT TO BE SPECIFIED AT
MULTIPLES OF 8" (203mm) O.C. REFER TO NUDURA REINFORCEMENT
PLACEMENT DETAILS.

This detail is for general informational purposes only. The project design professional determines, in its sole discretion, whether this detail or a functionally equivalent detail is best suited for the project with respect to any architecture, engineering, and design requirements, including any local building code requirements. If this document is not reviewed and the product is not approved for use by a licensed design professional, the customer agrees that the detail may contain substantive flaws requiring correction, and hereby releases Tremco CPG Inc. from any and all liability related to the design and installation of the product. This detail is subject to change without notice. Contact Tremco to ensure you have the most recent version.

Combustible Construction - Intermediate Floor



Nudura Technical Support: 866-468-6299
International: +1 705-726-9499

Detail: Nudura 12" (305mm) Form Unit, Simpson Ledger Hanger System, Brick
Veneer Finish, Parallel to Wall, Intermediate Floor Connection

Drawn by: TVC

Checked by: KS

Scale: 1:8

Revision #: 04

Revised by: KAB

Date: 3/13/2024

www.tremcocpg.com

File Name:

C12A22



Construction Products Group

TREMCO EXOAIR 230,
ENVIRODRI OR FUNCTIONAL
EQUIVALENT

WET SET DOWELS TO MATCH
VERTICAL REINFORCEMENT
BETWEEN POUR OR AS
SPECIFIED

NUDURA 12" (305mm)
STANDARD FORM UNIT

HORIZ/VERT REINFORCEMENT
AS PER CODE OR AS
SPECIFIED (SEE NOTE 1)

BRICK VENEER C/W 1"
(25mm) AIR SPACE AND
BRICK TIES

MIN $\frac{1}{2}$ " (13mm)
GYPSUM BOARD

RIM JOIST

WOOD JOISTS/TJI OR
TRUSSES AS SPECIFIED

JOIST HANGER

SHEAR BRACKET

SIMPSON STRONG TIE
(ICFVL)

MIN $\frac{1}{2}$ " (13mm)
GYPSUM BOARD

NOTES:

1) FOR OPTIMAL REINFORCEMENT PLACEMENT IN THE NUDURA FORM,
SPACING OF HORIZONTAL REINFORCEMENT TO BE SPECIFIED AT 18"
(457mm) O.C. AND VERTICAL REINFORCEMENT TO BE SPECIFIED AT
MULTIPLES OF 8" (203mm) O.C. REFER TO NUDURA REINFORCEMENT
PLACEMENT DETAILS.

This detail is for general informational purposes only. The project design professional determines, in its sole discretion, whether this detail or a functionally equivalent detail is best suited for the project with respect to any architecture, engineering, and design requirements, including any local building code requirements. If this document is not reviewed and the product is not approved for use by a licensed design professional, the customer agrees that the detail may contain substantive flaws requiring correction, and hereby releases Tremco CPG Inc. from any and all liability related to the design and installation of the product. This detail is subject to change without notice. Contact Tremco to ensure you have the most recent version.

Combustible Construction - Intermediate Floor



Nudura Technical Support: 866-468-6299
International: +1 705-726-9499

Detail: Nudura 12" (305mm) Form Unit, Simpson Ledger Hanger System,
Intermediate Floor Connection, Brick Veneer Finish

Drawn by: TVC

Checked by: KS

Scale: 1:8

Revision #: 04

Revised by: KAB

Date: 3/13/2024

www.tremcocpg.com

File Name:

C12A23



Construction Products Group

TREMCO EXOAIR 230,
ENVIRODRI OR FUNCTIONAL
EQUIVALENT

WET SET DOWELS TO MATCH
VERTICAL REINFORCEMENT
BETWEEN POUR OR AS
SPECIFIED

NUDURA 12" (305mm)
STANDARD FORM UNIT

HORIZ/VERT REINFORCEMENT
AS PER CODE OR AS
SPECIFIED (SEE NOTE 1)

EXTERIOR FINISH AS
SPECIFIED

MIN $\frac{1}{2}$ " (13mm)
GYPSUM BOARD

RIM JOIST

WOOD JOISTS/TJI OR
TRUSSES AS SPECIFIED

JOIST HANGER

SHEAR BRACKET

SIMPSON STRONG TIE
(ICFVL)

MIN $\frac{1}{2}$ " (13mm)
GYPSUM BOARD

NOTES:

1) FOR OPTIMAL REINFORCEMENT PLACEMENT IN THE NUDURA FORM,
SPACING OF HORIZONTAL REINFORCEMENT TO BE SPECIFIED AT 18"
(457mm) O.C. AND VERTICAL REINFORCEMENT TO BE SPECIFIED AT
MULTIPLES OF 8" (203mm) O.C. REFER TO NUDURA REINFORCEMENT
PLACEMENT DETAILS.

This detail is for general informational purposes only. The project design professional determines, in its sole discretion, whether this detail or a functionally equivalent detail is best suited for the project with respect to any architecture, engineering, and design requirements, including any local building code requirements. If this document is not reviewed and the product is not approved for use by a licensed design professional, the customer agrees that the detail may contain substantive flaws requiring correction, and hereby releases Tremco CPG Inc. from any and all liability related to the design and installation of the product. This detail is subject to change without notice. Contact Tremco to ensure you have the most recent version.

Combustible Construction - Intermediate Floor



Nudura Technical Support: 866-468-6299
International: +1 705-726-9499

Detail: Nudura 12" (305mm) Form Unit, Simpson Ledger Hanger System, Exterior
Finish as Specified, Perp. to Wall, Intermediate Floor Connection

Drawn by: TVC

Checked by: KS

Scale: 1:8

Revision #: 04

Revised by: KAB

Date: 3/13/2024

File Name:

C12A24



Construction Products Group

www.tremcocpg.com